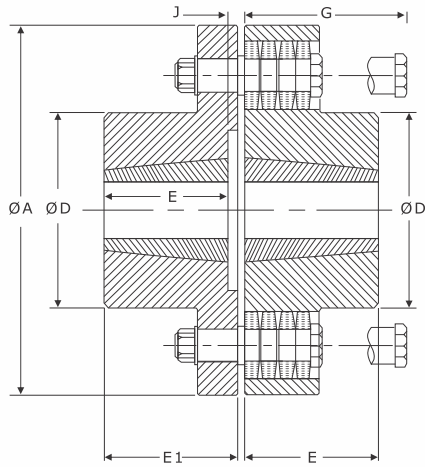


UTL URCT COUPLINGS

(Coupling with Taper Bush & Cone Rings as Elastomers)



FEATURES

- Simple mechanism, easy to inspect and change the flex cone rings, without moving either shaft or hub of the coupling
- Flex cone rings are the only wear parts. Minimise running cost
- Range up to 16000 Nm
- Taper bush gives clamping on shaft total surface
- Easy to replace thus minimising maintenance time

Dimensions & Technical Data

Size	Rated Torque Nm	kW Rating at 100 rpm	Maximum Speed rpm	Taper Bush Size	Dimensions are in mm							Moment of Inertia kg.m ² Approx (Min Bore)	Misalignment		
					Bore Range	Ø A	Ø D	E	E1	G	J		Angular (°)	Parallel (mm)	Axial (mm)
42	290	3.0	4000	1215	12-32	146	70	38	41	88	6	0.013	1°	0.1	1.5
48	480	5.0	3400	1615	14-42	171	82	38	41	114	6	0.032	1°	0.15	1.5
58	760	8.0	3000	2017	14-50	193	97	45	47	114	6	0.053	1°	0.15	1.5
70	1000	11.0	2700	2525	16-60	216	117	64	68	114	6	0.088	1°	0.15	1.5
75	2600	27.0	2300	2525	16-60	254	127	64	68	179	6	0.265	1°	0.2	1.5
85	3500	37.0	2090	3030	24-75	279	147	76	80	179	7	0.39	1°	0.2	1.5
105	5300	56.0	1760	3535	35-90	330	180	89	93	179	6	0.773	1°	0.2	1.5
120	9000	94.0	1570	4040	40-100	370	206	102	106	244	10	1.718	1°	0.25	1.5
135	12000	128.0	1390	4545	55-115	419	230	114	119	244	11	2.869	1°	0.25	1.5
150	16000	167.0	1280	5050	70-127	457	256	127	132	244	11	4.069	1°	0.25	1.5

MATERIAL SPECIFICATIONS

Hub	Size-42-105	Cast Iron	CI	DIN 1693 GG 20
Hub	Size-120-150	Cast Iron	CI	DIN 1693 GG 25
Cone Ring 70° Shore A	All Size	Natural Rubber	NR	ASTM D2000 710
Coupling pin	All Size	Steel C40	St	EN/DIN 10263-2
Taper Bush	Size-1008-5050	Cast Iron	CI	DIN 1693 GG 20



• For temperature range of elastomers please see on page no. 34 - coupling selection